

CSA Architecture

The Horizon 2020 and Beyond conceptualisation seeks to capture the outworking of the mission of CSA

CSA 1.0 Preserve a Place

CSA 2.0 Embed Christian Distinctive

Seeks to preserve the biblical distinctiveness of schools through the continued development of Christian approaches to educational practice, employment, training and development. Six key levers have been identified as essential, including: culture, community development, biblical literacy, pedagogy, leadership and curriculum.

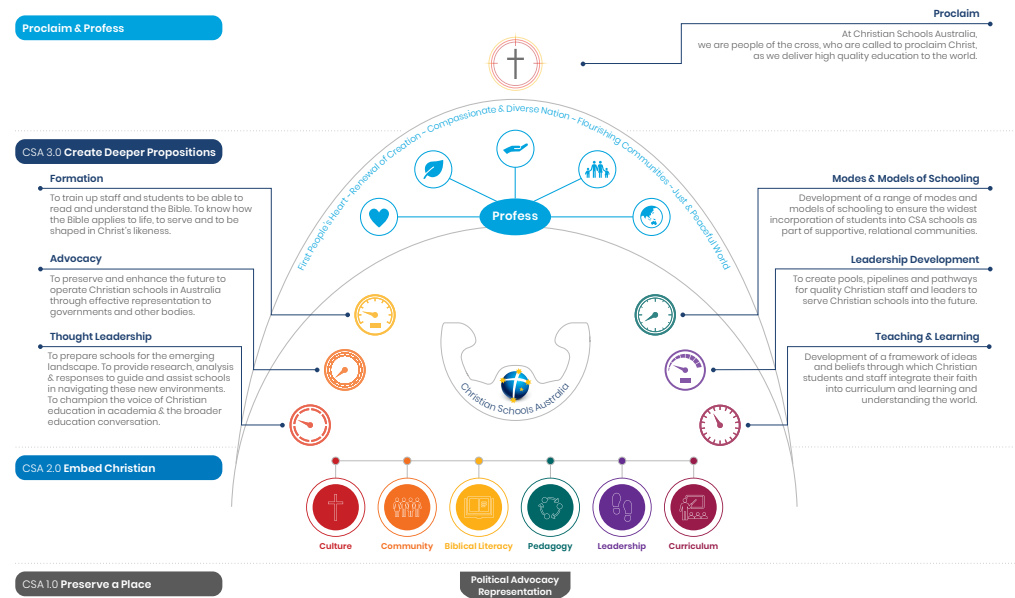
CSA 3.0 Create Deeper Propositions

Seeks to ensure the continued growth and fruitfulness of the Christian schooling movement by retaining an outward focus, generational appropriateness and cultural awareness. Schools are at different organisational life cycles and at different stages of maturity. CSA seeks to differentiate its services by equipping and challenging schools to grow in the areas of formation, advocacy, thought leadership, modes & models of schooling, leadership development, teaching and learning.

Proclaim & Profess

Where Horizon 1 looked at “protecting” a space for Christian schools, a well-formed Christian school is also able to “profess” a genuine alternative to our broken and fallen world. To this end, CSA has developed a range of profess statements to assist schools in articulating this vision for individuals and society.

Ultimately, CSA recognises that all we do comes under the headship of Christ and that He is leading and directing us beyond even what we can think or imagine. We have intentionally placed a Proclaim Statement at the peak of the architecture, which provides a strong theological platform for the other dimensions of the architecture to be understood.



Horizon 2020 & Beyond

Proclaim & Profess

Proclaim

At Christian Schools Australia, we are people of the cross, who are called to proclaim Christ, as we deliver high quality education to the world.

CSA 3.0 Create Deeper Propositions

Formation

To train up staff and students to be able to read and understand the Bible. To know how the Bible applies to life, to serve and to be shaped in Christ's likeness.

Advocacy

To preserve and enhance the future to operate Christian schools in Australia through effective representation to governments and other bodies.

Thought Leadership

To prepare schools for the emerging landscape. To provide research, analysis & responses to guide and assist schools in navigating these new environments. To champion the voice of Christian education in academia & the broader education conversation.

Modes & Models of Schooling

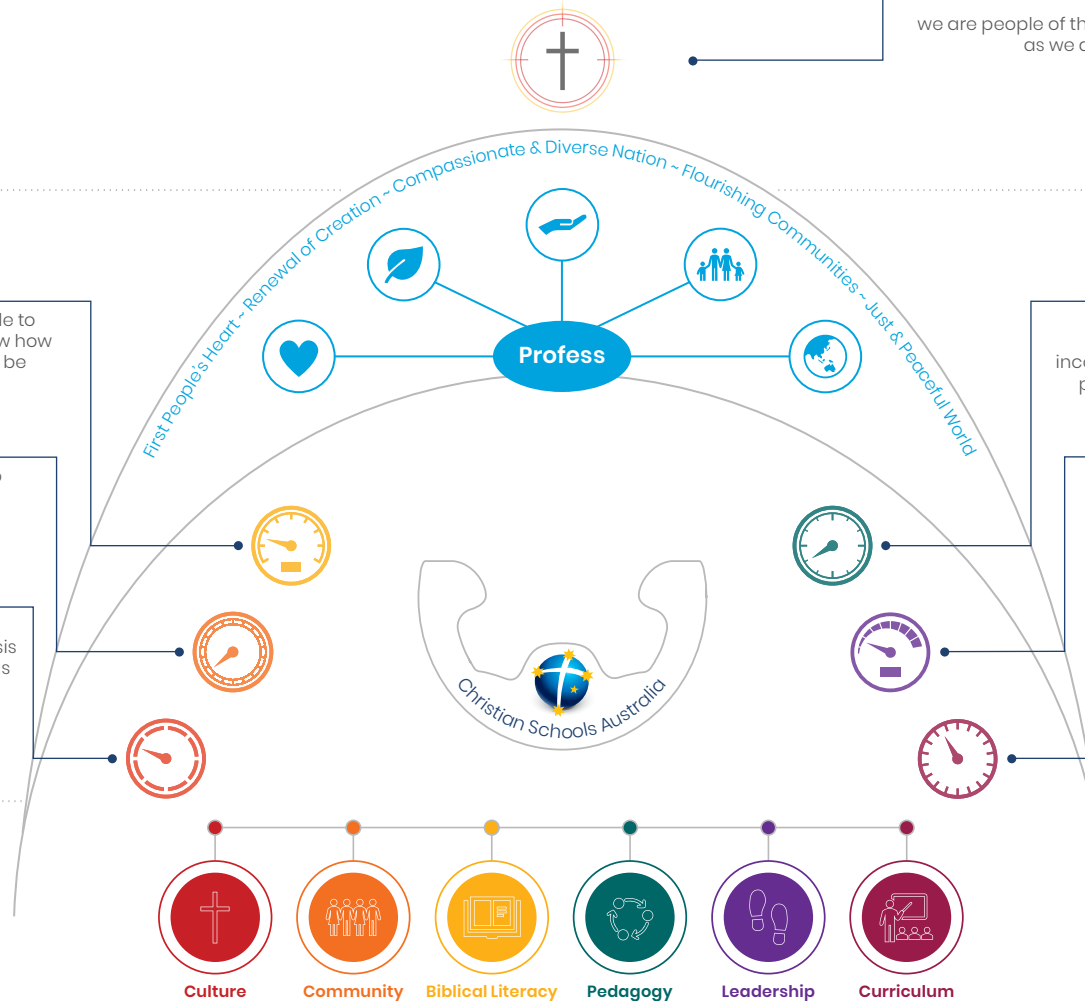
Development of a range of modes and models of schooling to ensure the widest incorporation of students into CSA schools as part of supportive, relational communities.

Leadership Development

To create pools, pipelines and pathways for quality Christian staff and leaders to serve Christian schools into the future.

Teaching & Learning

Development of a framework of ideas and beliefs through which Christian students and staff integrate their faith into curriculum and learning and understanding the world.



CSA 2.0 Embed Christian Distinctive

CSA 1.0 Preserve a Place

Political Advocacy
Representation